



VALVOLMECCANICA



USE AND MAINTENANCE



L007 – L007MAN ANTARES SPRAY GUN

This instruction manual is an integral part of the product to which it refers and it must accompany it in case of sale or transfer. Keep this instruction manual for every future use. VALVOLMECCANICA reserves the right to modify, at any time, the product's technical specifications.



READ CAREFULLY THIS INSTRUCTION MANUAL BEFORE THE INSTALLATION OF THE PRODUCT

The observance of what is related in this instruction manual is an essential condition for the safety of the operator, the integrity of the product and the maintenance of the general guarantee of sale. Every other use has to be considered improper and dangerous. VALVOLMECCANICA is not liable for any damage due to alterations and improper uses.

The equipment complies with the following regulations:

- BS EN ISO 16119-2 Agricultural and forester machines – Crop dusters and distributor of liquid fertilizers – Environmental protection part 2 crop dusters in field.

SUMMARY

1. TECHNICAL DATA
2. INTENDED USE
3. USE
4. SAFETY REGULATIONS
5. MAINTENANCE
6. PROBLEMS AND POSSIBLE SOLUTIONS
7. DISPOSAL
8. GUARANTEE STATEMENT

1 – TECHNICAL DATA

Max bar pressure Max operating pressure psi	Spray tip hole mm	Inlet
50 700	Standard 2,5 Standard 2,5	G1/2M Swivelling joint 1/2 BSPM Swivelling joint

2 – INTENDED USE

ANTARES Spray gun is suited for medium pressure application in medium and tall trees crops anti-parasitic treatments.

3 – USE

- Opening and closing fluid flow by opening trigger (n. 26 in the attached cutaway drawing) with a locking lever;
- Spray corner adjustment with regulating variator (from n. 12 to n. 28 in the attached cutaway drawing). Closer spray corners until obtaining a straight pin squirt pushing forward the variator; Larger spray corners up to getting a full cone pulling back the variator. Closed position obtained keeping closed the handle trigger with a locking stop and putting in vertical position the spray variator.
- Complete with swivel joint to avoid pipes torsions (n. 11 in the attached cutaway drawing);
- Pressure gauge version to control accurately the real working spray gun pressure.





WARNING

At the end of the work, always do a washing cycle of the spray gun with clean water in a field or in an appropriate place without obstacles, persons, animals, houses and streams.

4 – SAFETY REGULATIONS

- Always wear proper individual protection garment;
- Never direct the spray towards persons, animals, and objects;
- Don't leave unguarded the spray gun if it is connected to working spray equipment or to crop duster in action;
- Use a suitable tube for the maximum pressure for which the spray gun has been designed;
- Verify that on the outlet line there's placed a filter suitable for the dimensions of the hole spray tip used;
- The outlet circuit or the pump must have over-pressure valve.

5 – MAINTENANCE



WARNING

For every maintenance operation, the spray gun always must be disconnected and removed from the spray equipment. Any spray gun repairing or extraordinary maintenance operation must be done by a Customer Service or by an Authorized Dealer.

To identify the components that have to be adjusted, make reference to the attached cutaway drawing.

1. Nozzle cleaning or substitution:

- Rotate the nebulizer (A001PL0000);
- Unscrew the spray tip with a 17 hexagonal spanner;
- Clean the spray tip being careful to not damage it or replace it if is worn-out.
-

2. Seat and sealing gasket:

- Unscrew the plug (A044MI0000) with a 19 hexagonal spanner ;
- Remove the spring (A005MO2143) and the piston (A057MI0000);
- Remove the inset (A045MI0000) with a 13 hexagonal spanner;
- Remove the seals (A016OR0000);
- Replace the worn-out components and assemble all the parts following the same steps backwards.

6 – PROBLEMS AND SOLUTIONS

PROBLEM	CAUSE	SOLUTION
Liquid doesn't come out from the spray gun	Pump not switched on or spray tip closed	Switch on the pump or clean the spray tip
The spray is irregular and the nebulization is unsatisfactory	Spray tip dirty or worn-out	Pulire o sostituire l'ugello
	Nebulizer's position not correct for the spray tip used	Locate correctly the nebulizer
The opening trigger is blocked or doesn't operate	Dirt over the internal components	Maintenance of the internal components or turn to a Customer Service
The spray gun doesn't close	Worn-out seat or gaskets	Maintenance of the seat and of the sealing gaskets
Liquid leak during the work	Worn-out gaskets or damaged spray gun	Check the sealing gaskets or turn to a Customer Service

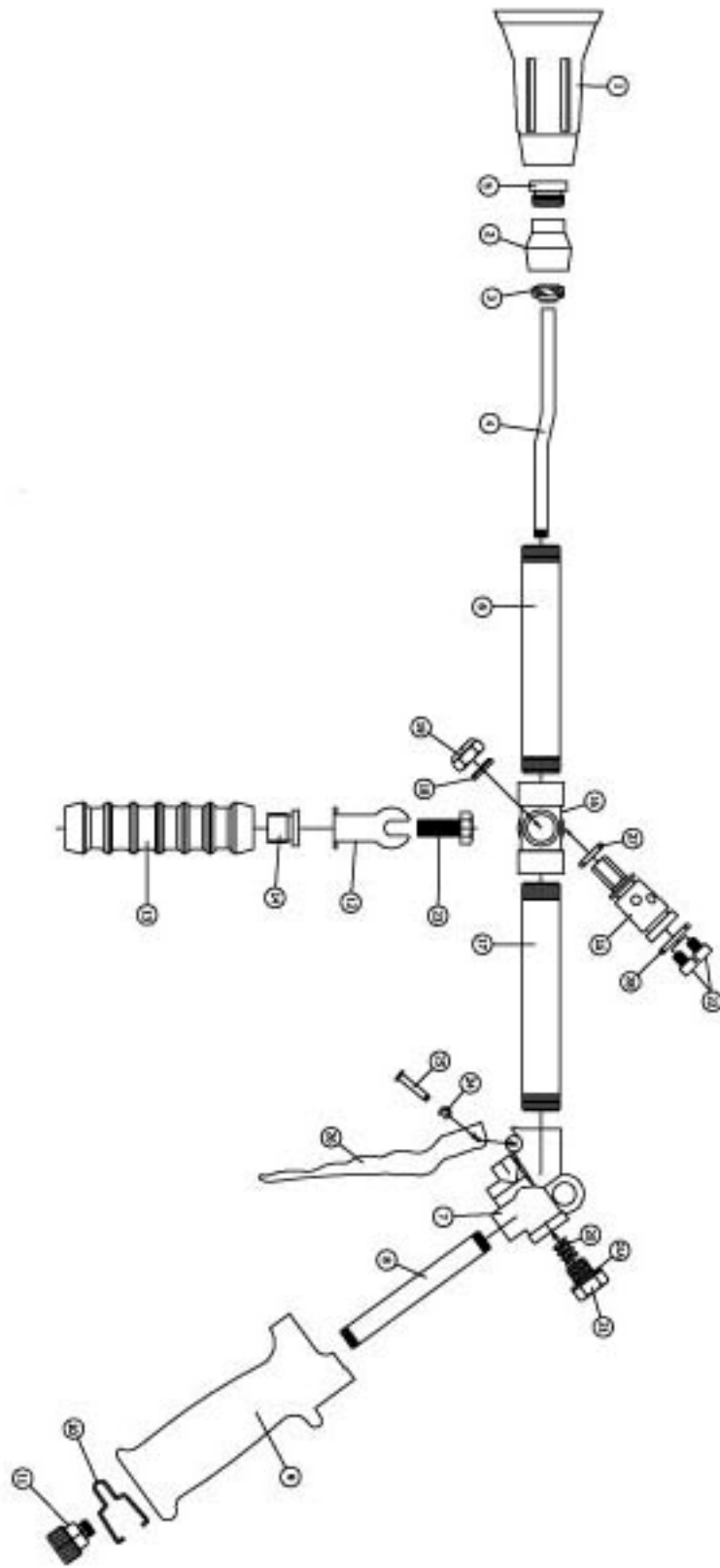
7 – DISPOSAL

This device has to be disposed of in compliance with the current regulations of the country of use.

8 – GUARANTEE STATEMENT

This device is guaranteed for a 12 months period from the date of sale to the client user. The complete information about the guarantee statement are available in VALVOLMECCANICA's general catalogue and on our web site: <http://www.valvolmeccanica.com>

ANTARES SPRAY GUN EXPLODED VIEW DRAWING



PARTS LIST

N.	CODE	DESCRIPTION	QUANTITY
1	A001PL0000	TURBO	1
2	L046MI0000	TOP SPRAY GUN	1
3	A059MI0000	CONVEYOR Ø 19 x 10	1
4	A062MI0000	SHAPED TUBE Ø 8 x 1	1
5	A013PI0025	CERAMIC SPRAY TIP	1
6	A061MI0000	FRONT STAINLESS STEEL TUBE M23 x 1	1
7	L037CO0000	ANTARES BODY	1
8	A071MI0000	STAINLESS STEEL TUBE Ø 16 x 0,6	1
9	A003PL0000	HANDLE	1
10	A073MI0000	SHAPED RING D.F. 2	1
11	L00.12	SWIVELLING GROUP	1
12	A049MI0000	STAINLESS STEEL FORK	1
13	A028CO0000	CENTRAL GRIP	1
14	L047MI0000	GRIP STUD BOLT	1
15	L036CO0000	MALE DIVERTER	1
16	L035CO0000	DIVERTER BODY TAP	1
17	A054MI0000	BACK STAINLESS STEEL TUBE M23x1	1
18	L043MI0000	WASHER Ø 24	1
19	A048MI0000	LOCKNUT 12MA	1
20	A005MO2143	TAP SPRING	1
21	A044MI0000	RETAINING TAP	1
21A	A005OR0000	O-RING 17,86 x 2,62	1
22	A050MI0000	CAP SCREW M6 x 8	1
23	A051MI0000	HEXSCREW M8 x 16	1
24	A072MI0000	SEGER 3,2 x 7,3	1
25	A055MI0000	LEVER PIN	1
26	A002PL0000	LEVER	1
27	A012OR1394	O-RING 13,94 x 2,62	1
28	A013OR1712	O-RING 17,12 x 2,62	1