



USE AND MAINTENANCE



L008 – L008MAN SIRIO SPRAY GUN

This instruction manual is an integral part of the product to which it refers and it must accompany it in case of sale or transfer. Keep this instruction manual for every future use. VALVOLMECCANICA reserves the right to modify, at any time, the product's technical specifications.



READ CAREFULLY THIS INSTRUCTION MANUAL BEFORE THE INSTALLATION OF THE PRODUCT

The observance of what is related in this instruction manual is an essential condition for the safety of the operator, the integrity of the product and the maintenance of the general guarantee of sale. Every other use has to be considered improper and dangerous. VALVOLMECCANICA is not liable for any damage due to alterations and improper uses.

The equipment complies with the following regulations:

- BS EN ISO 16119-2 Agricultural and forester machines – Crop dusters and distributor of liquid fertilizers – Environmental protection part 2 crop dusters in field.

SUMMARY

1. TECHNICAL DATA
2. INTENDED USE
3. USE
4. SAFETY REGULATIONS
5. MAINTENANCE
6. PROBLEMS AND POSSIBLE SOLUTIONS
7. DISPOSAL
8. GUARANTEE STATEMENT

1 – TECHNICAL DATA

Max bar pressure Max operating pressure psi	Spray tip hole mm	Inlet
50 700	from Ø 1.0 to 2,5	G1/2M Swivelling joint 1/2 BSPM Swivelling joint

2 – INTENDED USE

SIRIO Spray gun is suited for low and medium pressure application in anti-parasitic treatments in vineyard, orchards and greenhouses floriculture.

3 – USE

- Opening and closing fluid's flow by means of opening-trigger (n.26 in the attached cutaway drawing) with a trigger locking stop;
- Adjustment of the spray corner using the trigger (n. 22 in the attached cutaway drawing). It's possible to obtain narrower spray corners up to getting a straight pin rotating the trigger upwards; wider spray corners up to a full cone are obtained rotating the trigger in the opposite direction;
- Complete with swivel connection to avoid pipes torsions (n. 11 in the attached cutaway drawing);
- Version with pressure gauge to control accurately the real working pressure of the spray gun.





WARNING

At the end of the work, always do a washing cycle of the spray gun with clean water in a field or in an appropriate place without obstacles, persons, animals, houses and streams.

4 – SAFETY REGULATIONS

- Always wear proper individual protection garment;
- Never direct the spray towards persons, animals and objects;
- Don't leave unguarded the spray gun if it is connected to working spraying equipment or to crop duster in operation;
- Use a pipe suitable for the maximum pressure for which it has been suited;
- Verify that a proper filter in respect to the dimensions of the nozzle hole used has been placed on the outlet line;
- The outlet circuit or the pump must have an overpressure valve.

5 – MAINTENANCE



WARNING

Before any maintenance operation, the spray gun always must be disconnected from the pressure line and removed from the spraying equipment. Any repairing or extraordinary maintenance operation must be done by a Customer Service or by an Authorized Dealer.

To identify the components that have to be adjusted, make reference to the attached cutaway drawing.

1. Nozzle's cleaning or substitution:

- Rotate the nebulizer (A001PL0000);
- Unscrew the spray tip with a 17 hexagonal spanner;
- Clean the spray tip being careful to not damage it or replace it if is worn-out.

2. Adjustment's components:

- Replace the allen screw (A070MI0000) and the regulation trigger (A004PL0000);
- Extract the pivot (A063MI0000);
- Replace and lubricate the O-Ring (A018OR0000) and the pivot (A063MI0000) with waterproof grease;
- Assemble the pivot;
- Assemble the components previously removed, being careful to not damage the O-Rings.

3. Seat and sealing gaskets:

- Unscrew the plug (A044MI0000) with a 19 hexagonal spanner;
- Remove the spring (A005MO2143) and the piston (A057MI0000);
- Remove the inset (A045MI0000) with a 13 hexagonal spanner;
- Remove the seals (A016OR0000);
- Replace the worn-out components and assemble all the parts following the same steps backwards.

6 – PROBLEMS AND SOLUTIONS

PROBLEM	CAUSE	SOLUTION
Liquid doesn't come out from the spray gun	Pump not switched on or spray tip closed	Switch on the pump or clean the spray tip
The spray is irregular and the nebulization is unsatisfactory	Spray tip dirty or worn-out	Clean or replace the nozzle
	Nebulizer's position not correct for the spray tip used	Locate correctly the nebulizer
The opening trigger is blocked or doesn't operate	Dirt over the internal components	Maintenance of the internal components or turn to a Customer Service
Adjustment spray corner trigger is blocked	Dirt over the internal components	Maintenance of the adjustment components
The spray gun doesn't close	Worn-out seat or gaskets	Maintenance of the seat and of the sealing gaskets
Liquid leak during the work	Worn-out gaskets or damaged spray gun	Check the sealing gaskets or turn to a Customer Service

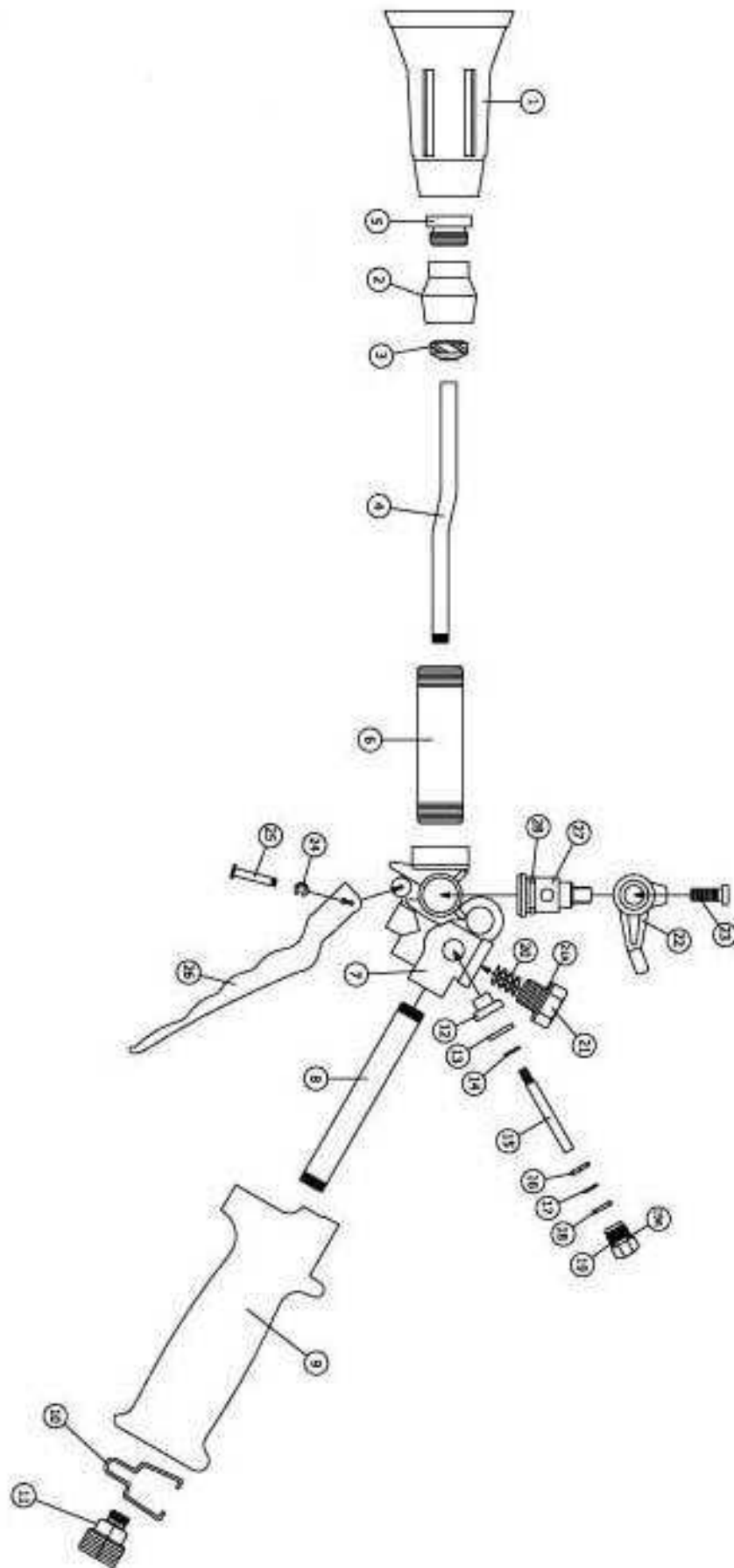
6 – DISPOSAL

This device has to be disposed of in compliance with the current regulation of the country of use.

7 – GUARANTEE STATEMENT

This device is guaranteed for a 12 months period from the date of sale to the client user. The complete information about the guarantee statement are available in VALVOLMECCANICA's general catalogue and on our web site: <http://www.valvolmeccanica.com>

SIRIO EXPLODED VIEW DRAWING



PARTS LIST

NUMBER	CODE	DESCRIPTION	QUANTITA'
1	A001PL0000	Turbo	1
2	L046MI0000	Sprayer head	1
3	A059MI0000	Ø 19 x 10 Conveyor	1
4	A062MI0000	Ø 8 Tube x moulded	1
5		Ceramic spray tip	1
6	A061MI0000	M23 x 1 Stainless steel tube	1
7	L040CO0000	Sirio Body	1
8	A071MI0000	Ø 16 x 0,6 Stainless steel tube	1
9	A003PL0000	Handle	1
10	A073MI0000	D.F. 2 moulded ring	1
11	L00.12	Swivelling group	1
12	A056MI0000	Breechblock	1
13	A014GU0000	Ø 14 x 4 x 2 viton gasket	1
14	A058MI0000	Ø 9 F.P. 4 washer	1
15	A057MI0000	Beam pushing breechblock	1
16	A017OR0000	4,47 x 1,78 O-ring	1
17	A068MI0000	Ø 7,7 x 1 F.0.5.1 washer	1
18	A017OR0000	4,47 x 1,78 O-ring	1
19	A045MI0000	Nut keeping breechblock	1
19A	A016OR0000	7,65 x 1,78 O-ring	1
20	A005MO2143	Plug spring	1
21	A044MI0000	Keeping plug	1
21A	A015OR0000	17,86 x 2,62 O-ring	1
22	A004PL0000	Regulator lever	1
23	A070MI0000	M6 x 16 allen screw	1
24	A072MI0000	3,2 x 7,3 circlip	1
25	A055MI0000	Plug for lever	1
26	A002PL0000	Lever	1
27	A063MI0000	Flow diverter pivot	1
28	A018OR0000	13,10 x 2,62 O-ring	1